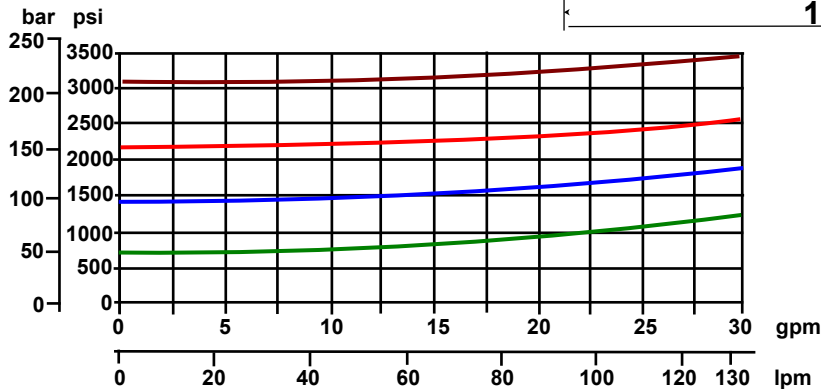
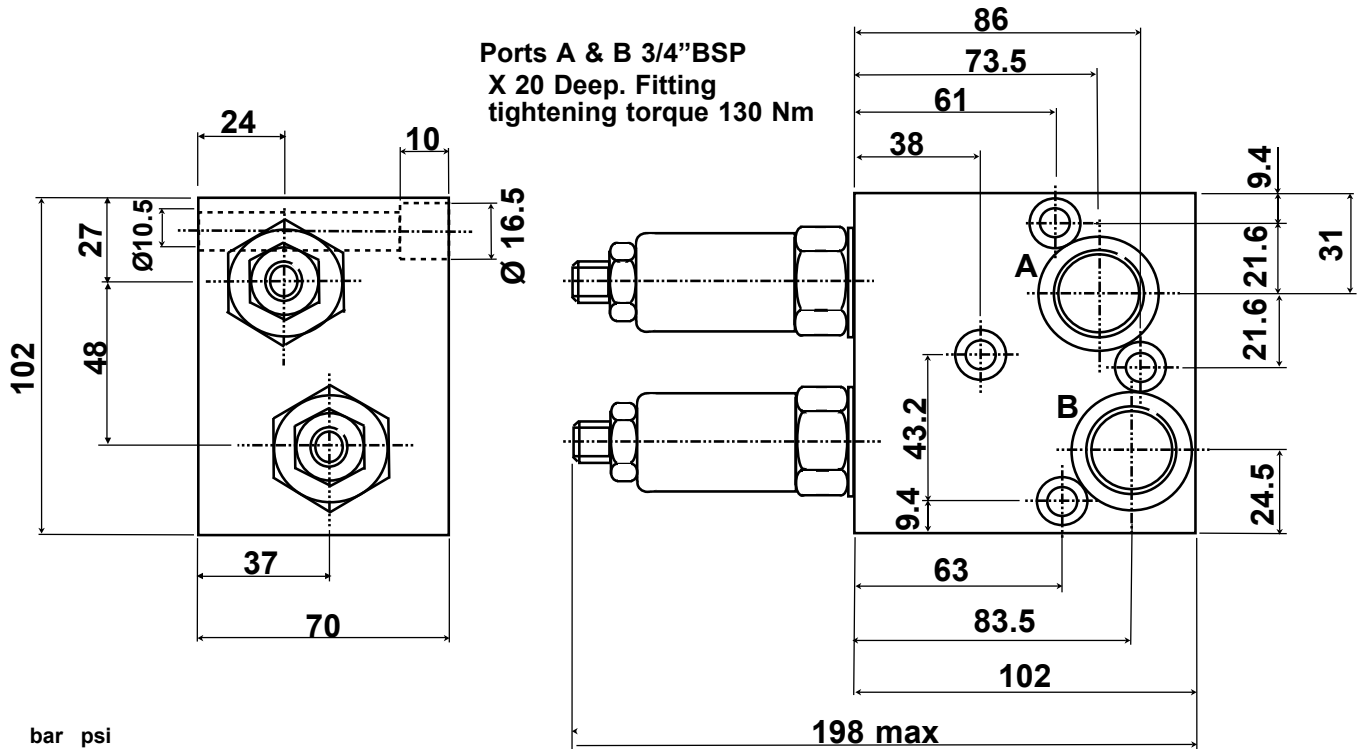


ANCILLARY EQUIPMENT

MXR30T

MOTOR MOUNTED CROSS LINE RELIEF VALVE for MT SERIES MOTORS



— Pressure 210bar (3045psi)
— Pressure 150bar (2175psi)
— Pressure 100bar (1450psi)
— Pressure 50bar (725psi)

All ratings with hydraulic oil at 50°C & 32 mm²/s

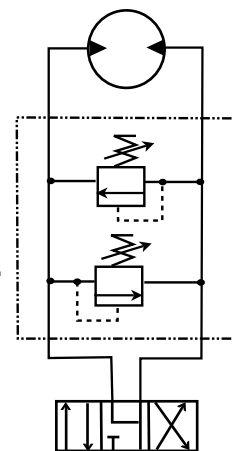
Maximum pressure 3000 psi 210 bar
Minimum pressure setting 1160 psi 80 bar
Nominal rated flow 120 lpm

Valves supplied complete with mounting screws & 'O' Rings.
 Valves are not pre-set, should a set pressure be required please specify at time of order.

Mineral based Hydraulic fluids with anti-wear additives are recommended with a viscosity of 35 mm²/s at a temperature of 50°C. Recommended oil cleanliness ISO 19/14 with a nominal filtration of 25 micron or better.

Steel body and valve sections
 Tightening torque for mounting screws 35 Nm

WEIGHT 5.5 kg



The policy of Adan Limited is one of continual development and the right is reserved to alter specifications without notice.



ADAN LIMITED

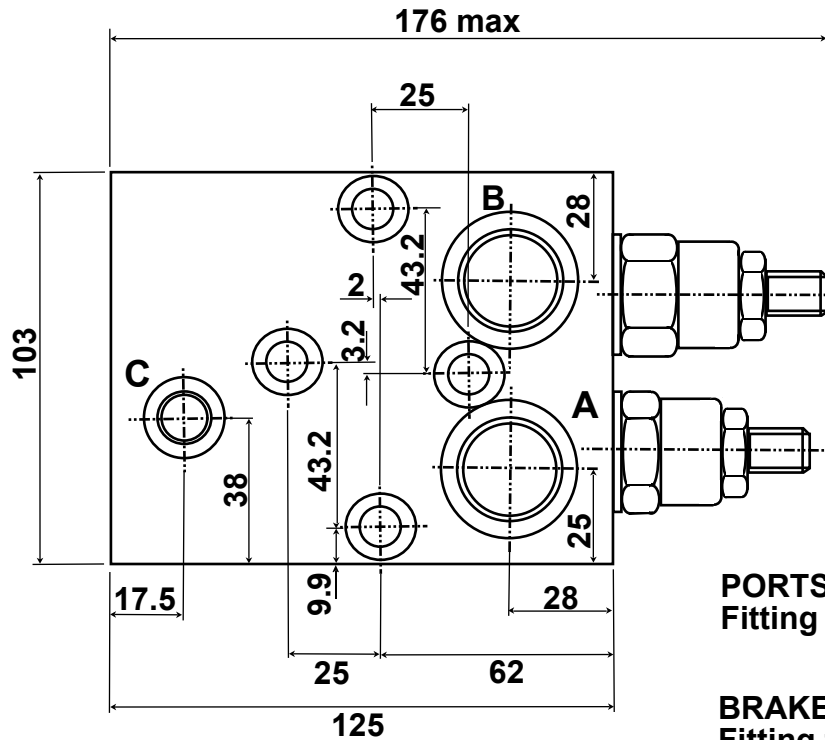
RIVERSIDE IND. ESTATE BOSTON LINCOLNSHIRE ENGLAND
 Tel: +44 (0)1205 311500 Fax: +44 (0)1205 358013
 email: sales@adanltd.co.uk website: www.adanltd.co.uk



ANCILLARY EQUIPMENT

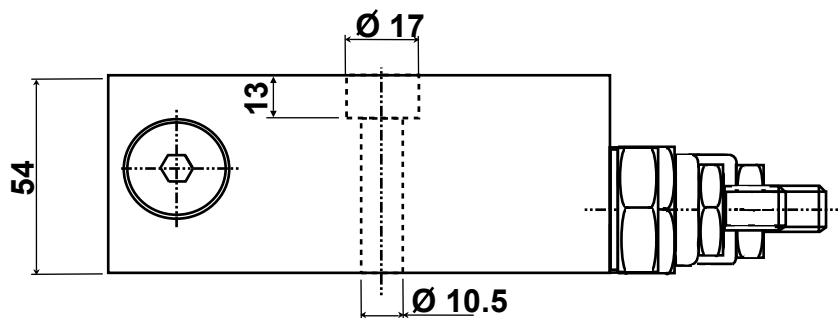
OCV 30T

MOTOR MOUNTED OVER CENTRE
VALVE for MT SERIES MOTORS



PORTS 'A' & 'B' 3/4" BSP X 17 DEEP
Fitting tightening torque 130 Nm

BRAKE PORT 'C' 1/4" BSP X 14 DEEP
Fitting tightening torque 30 Nm



Maximum pressure 280 bar 4060 psi
Pressure range 70-250 bar 1015 - 3625 psi
Maximum rated flow 100 lpm
Pilot ratio 4.25:1
Valve supplied complete with mounting
screws & 'o' rings.
Valves are not pre-set should a set pressure
be required please state at time of order.

Mineral based Hydraulic fluids with anti-wear
additives are recommended with a viscosity
of 35 mm²/s at a temperature of 50°C.
Recommended oil cleanliness ISO 19/14 with a
nominal filtration of 25 micron or better.
Steel body and valve sections
Tightening torque for mounting screws 35 Nm

WEIGHT 6 kg

The policy of Adan Limited is one of continual development and the right is reserved to alter specifications without notice.



ADAN LIMITED

RIVERSIDE IND. ESTATE BOSTON LINCOLNSHIRE ENGLAND
Tel: +44 (01205) 311500 Fax: +44 (01205) 358013
email: sales@adanltd.co.uk website: www.adanltd.co.uk



OPERATION

The check valve section allows free flow into the actuator, then holds and locks the load against movement.
 The pilot assisted relief valve section will give controlled movement when pilot pressure is applied. The relief section is normally set to open at a pressure of at least 1.3 times the maximum load induced pressure but the pressure required to open the valve and allow movement depends on the pilot ratio of the valve.
 The pressure required to open the valve and start movement can be calculated as follows:-

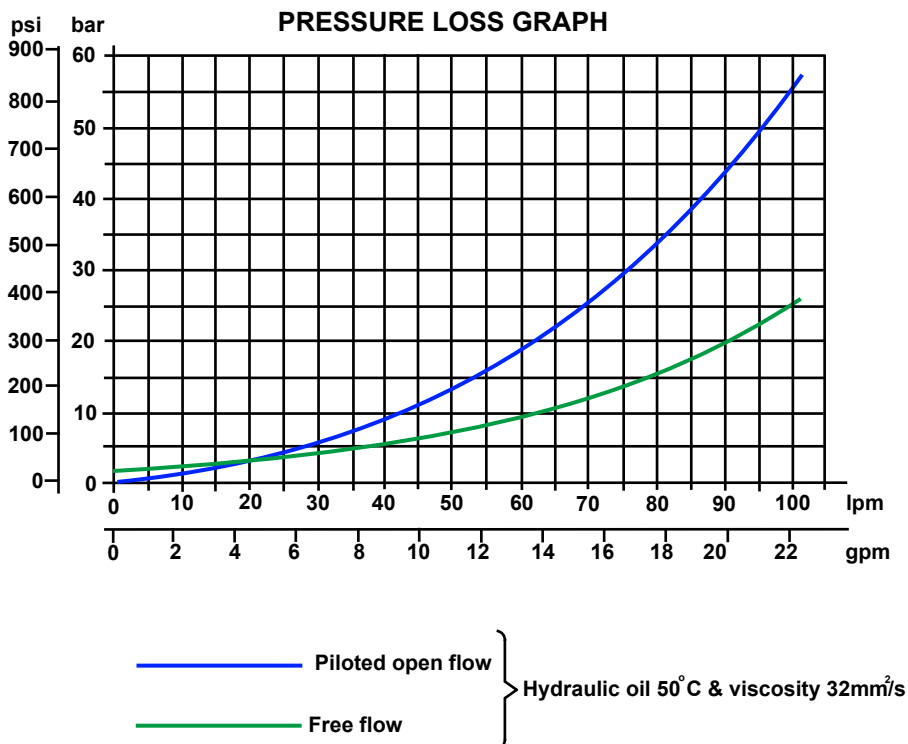
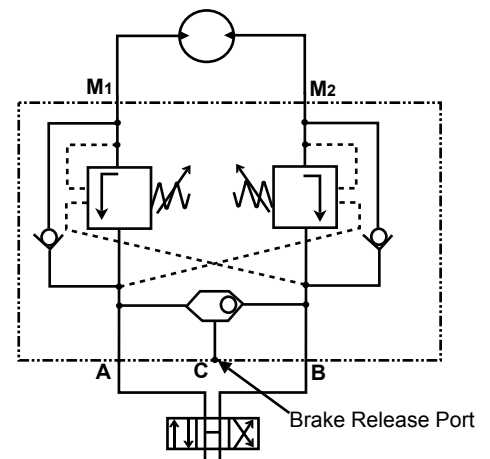
$$\text{Pilot Pressure} = \frac{(\text{Relief Setting}) - (\text{Load Pressure})}{(\text{Pilot Ratio})}$$

Example:- Pilot Ratio 4.25:1 Relief set at 145 bar (2100psi) and a load pressure of 114 bar (1650 psi)

$$\frac{145\text{bar (2100psi)} - 114\text{bar (1650psi)}}{4.25} = 7.3\text{bar (105psi)}$$

Any increase in pilot pressure will result in an increase in load velocity and a reduction in pilot pressure, slowing and stopping load movement.
 When used with an open centre directional valve it will allow thermal expansion relief of the hydraulic fluid.

These motor mounted valves have the load control of dual overcentre valves with the additional advantage of a brake release shuttle valve for smooth safe performance.



The policy of Adan Limited is one of continual development and the right is reserved to alter specifications without notice.



ADAN LIMITED
 RIVERSIDE IND. ESTATE BOSTON LINCOLNSHIRE ENGLAND
 Tel: +44 (01205) 311500 Fax: +44 (01205) 358013
 email: sales@adanltd.co.uk website: www.adanltd.co.uk

